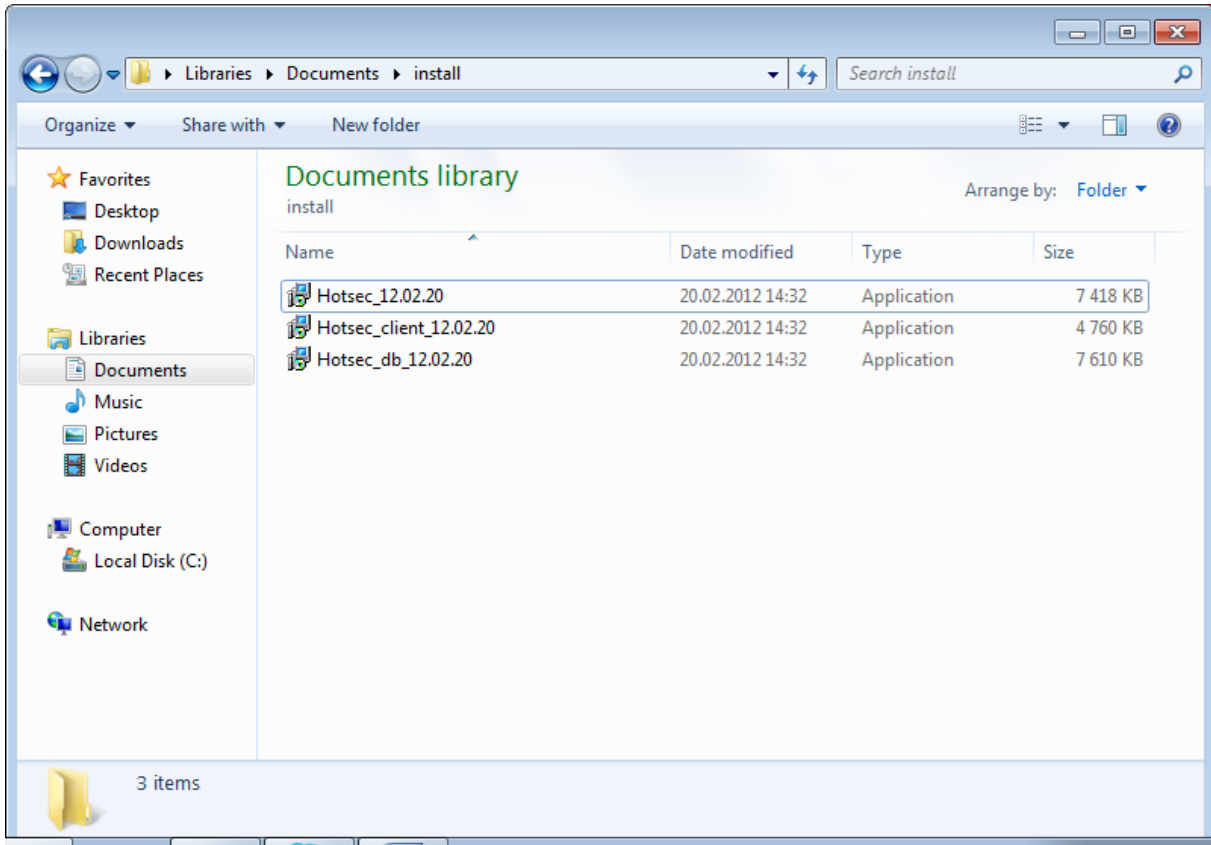


Hotsec installation manual for Paradox EVO users

There are 3 components of Hotsec.

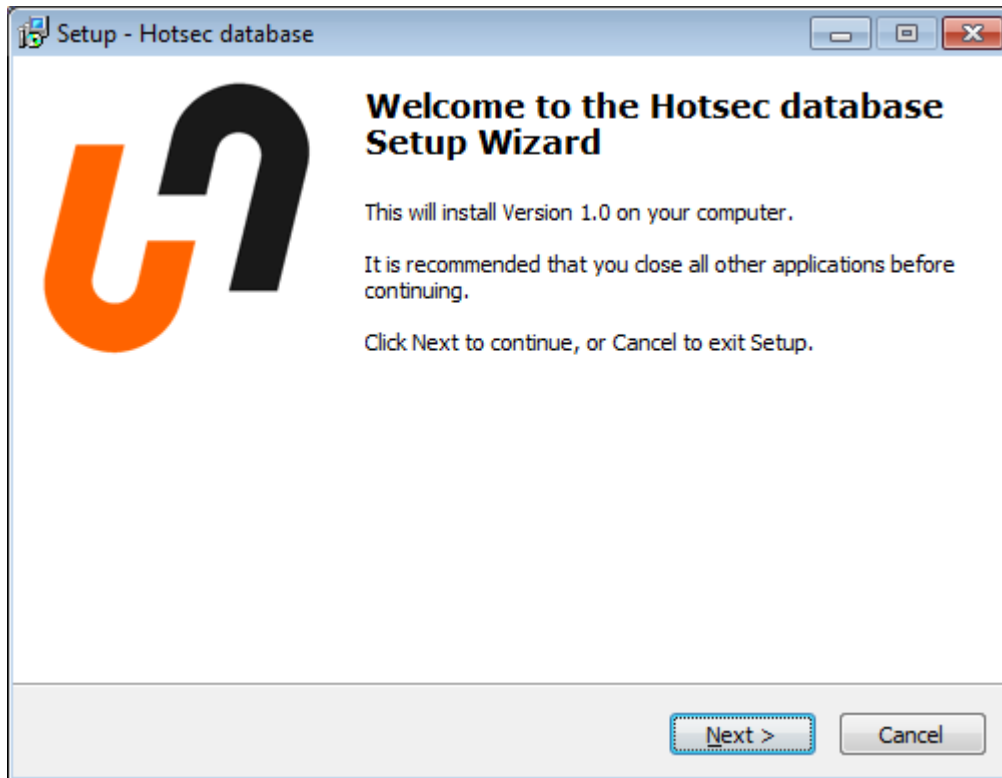


- 1) **Hotsec database** usually the filename is in format Hotsec_db_xx.xx.xx_yy, where xx is the release date and yy language (English language doesn't have yy). Database installation package creates empty Hotsec database and installs Firebird database engine if it is not found in the system.
- 2) **Hotsec core** usually the filename is in format Hotsec_xx.xx.xx_yy, where xx is the release date and yy language (English language doesn't have yy). Core installation package contains Hotsec core server plus all the services needed to communicate between Hotsec core and hardware.
- 3) **Hotsec client** usually the filename is in format Hotsec_Client_xx.xx.xx_yy, where xx is the release date and yy language (English language doesn't have yy). Hotsec client is user interface for Hotsec server. If you are just using Hotsec as a client connected to server you don't need to install anything else besides the client.

The installation order is not important if you want to install the full package of Hotsec software (database, core and client).

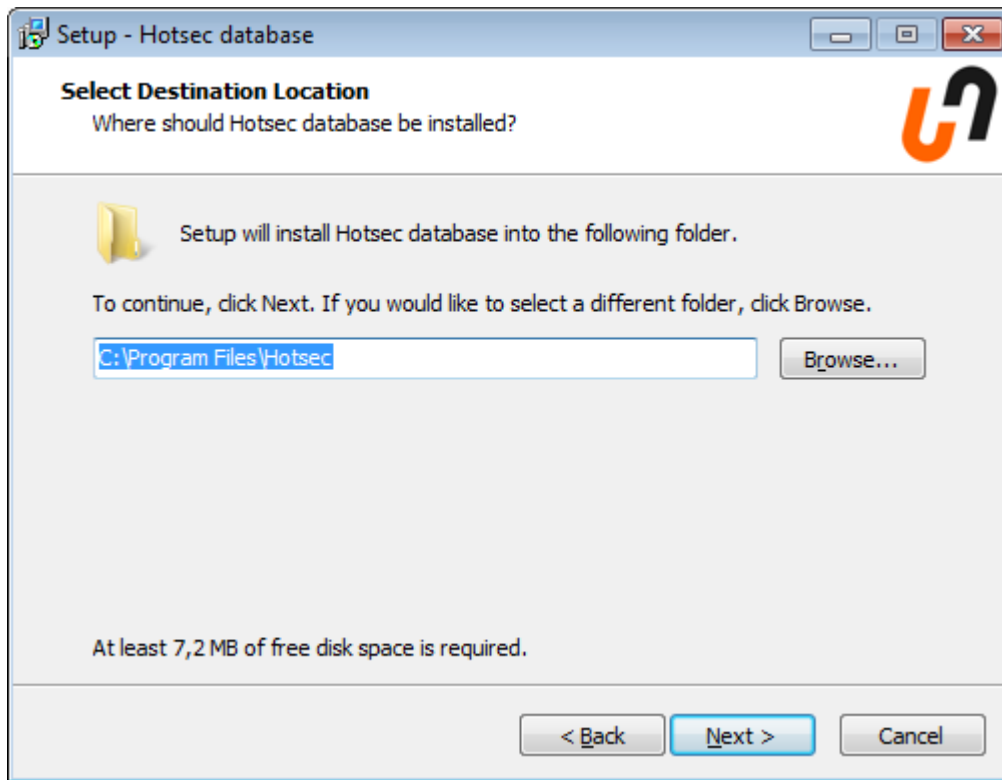
Hotsec database installation process

After launching the Hotsec_db package the following welcome message should appear



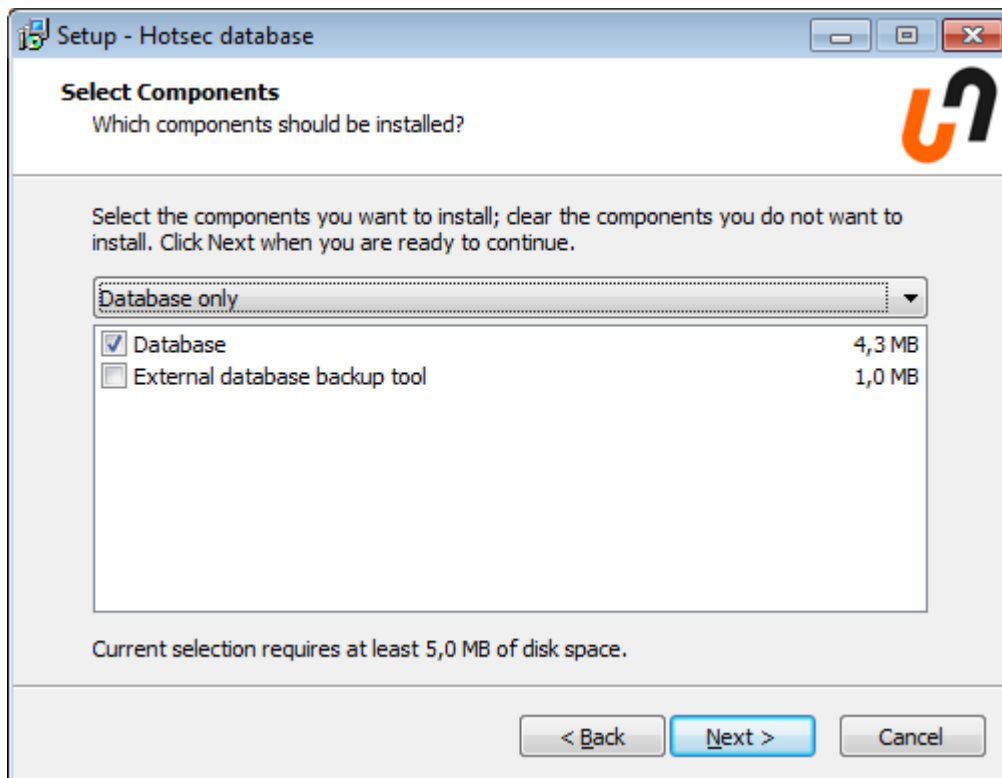
Click "Next" if you want to proceed.

Next window will ask the location of the Hotsec. By default it is C:\Program Files\Hotsec with 32-bit windows systems. You can change the location if you like.



Click "Next" to continue.

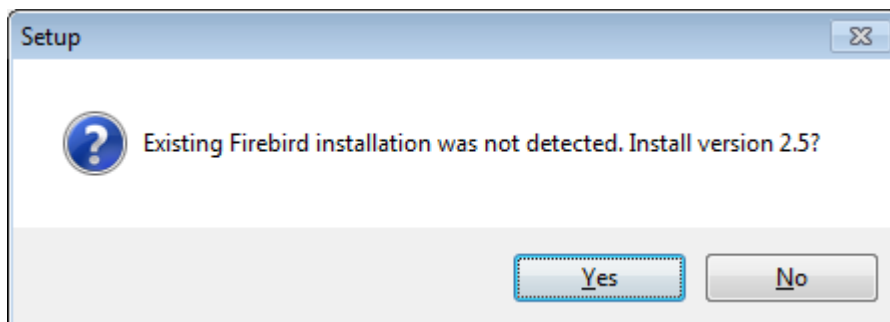
The next dialogue will ask what database components should be installed



Besides database the package contains database backup tool. Install it if you want to make regular and automated backups from your Hotsec database.

Click "Next" to continue.

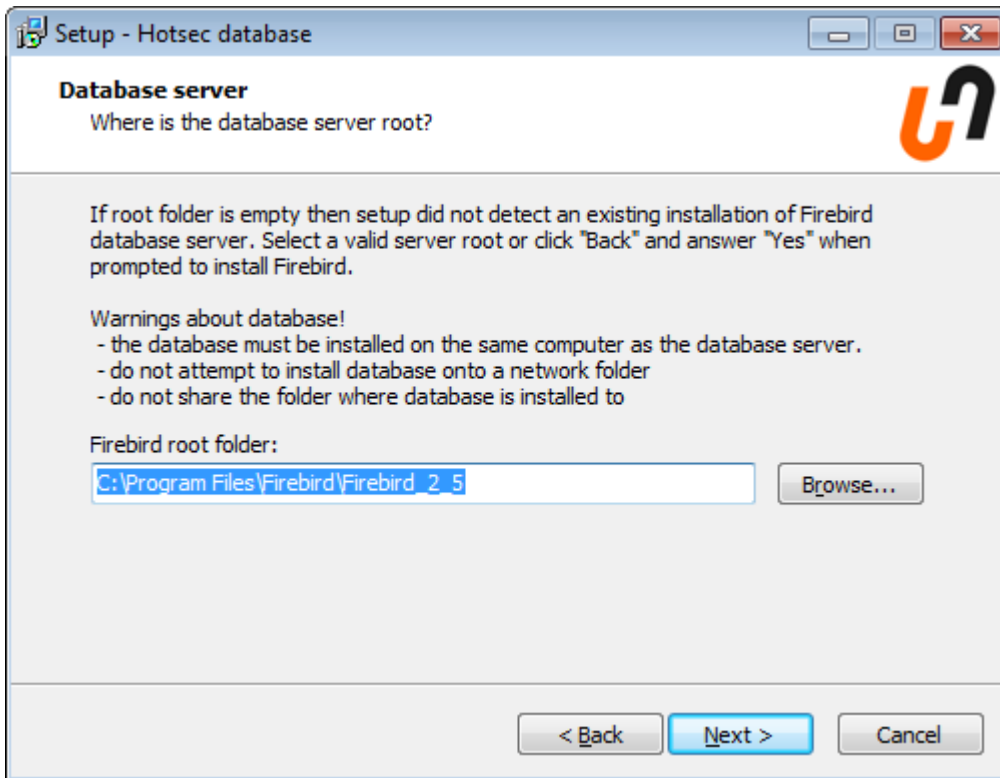
Next the installation software will check the system for Firebird database engine. If correct version not found the following dialogue will appear



Click "Yes" to continue.

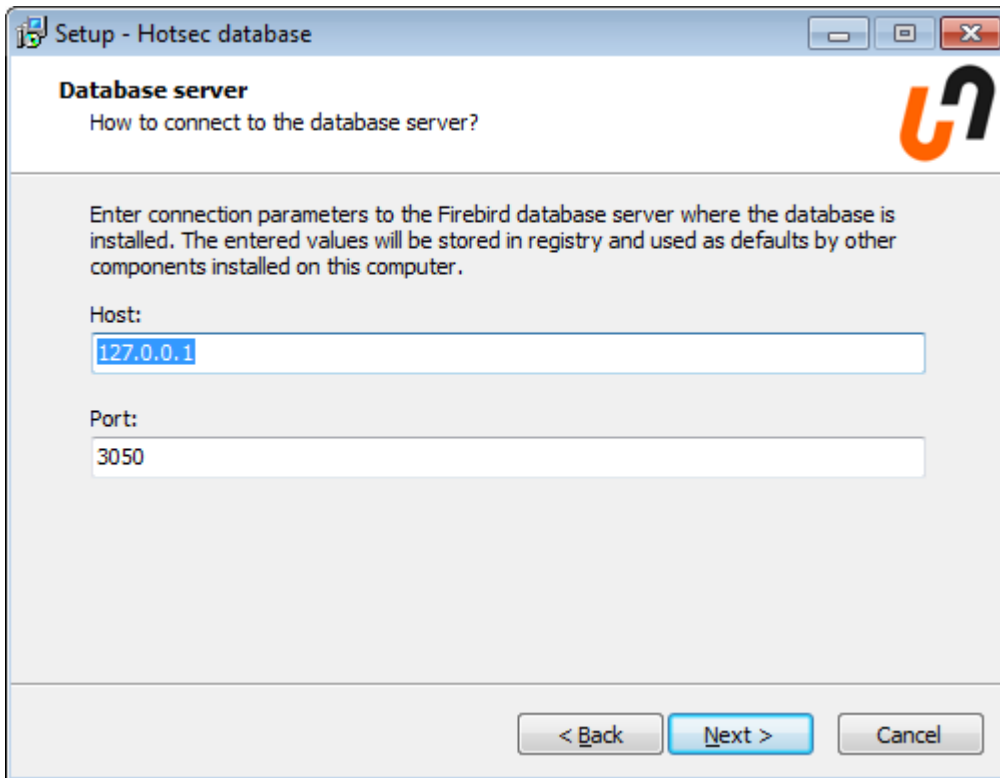
Firebird database engine installation will be launched.

Next window will ask the location where the Firebird should installed



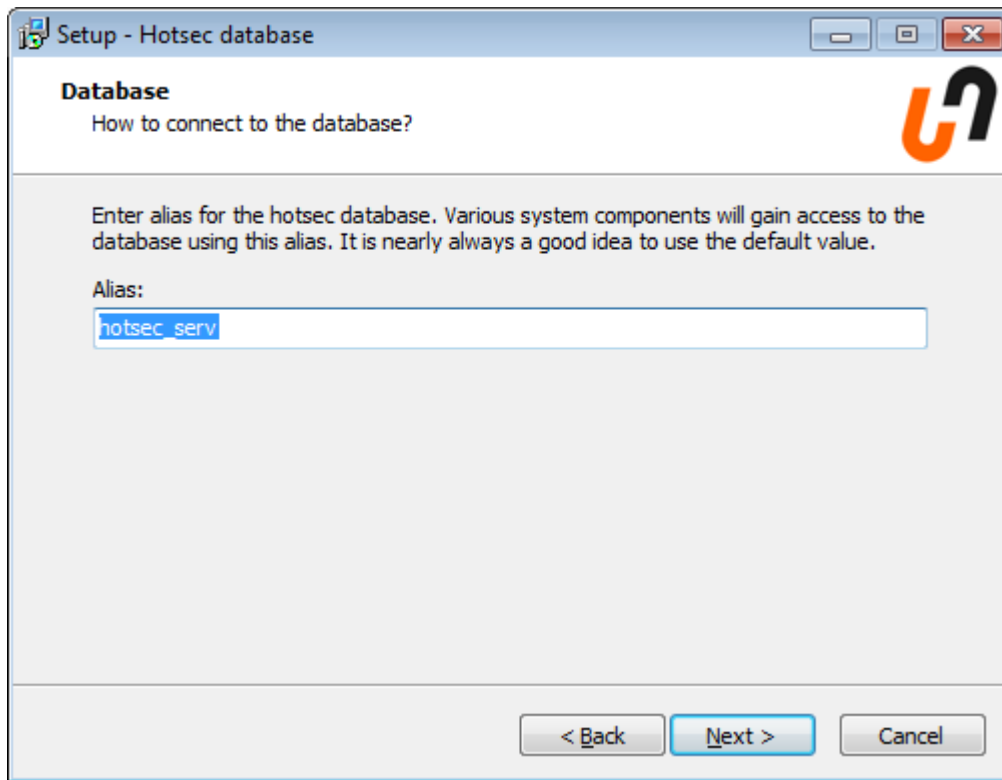
Click "Next" to continue.

Next dialogue is Hotsec dialogue asking for database server address and TCP port



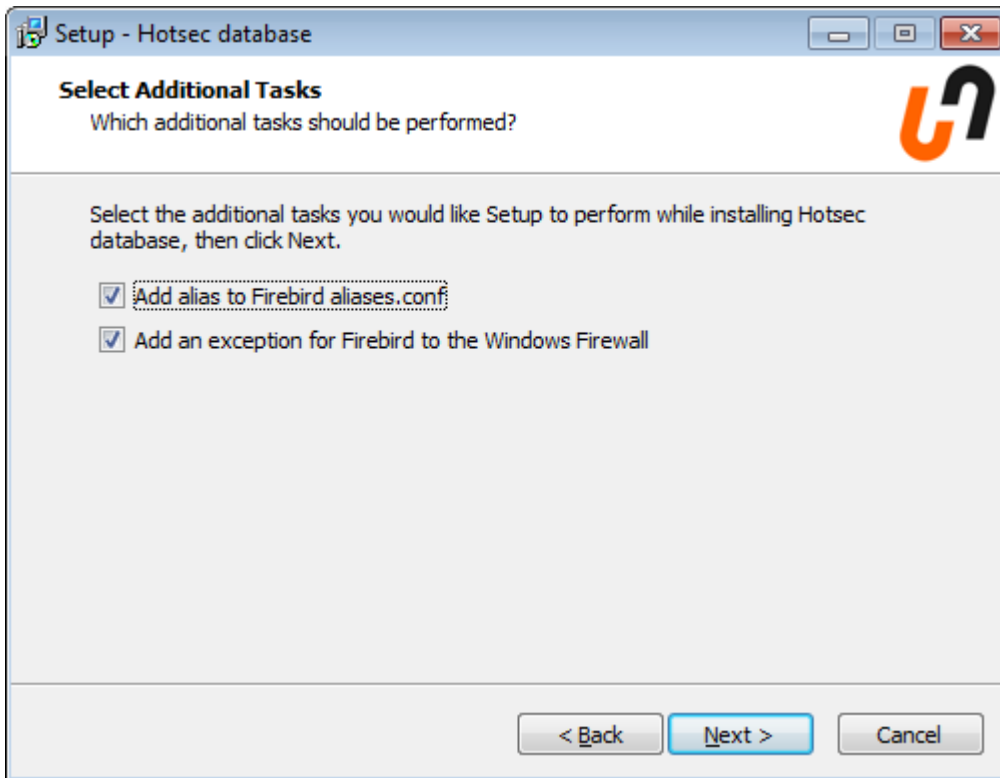
If you have followed the steps in this manual do not change those settings. Those settings are needed in case if Firebird database is installed into different PC.

Next window will ask database alias in Firebird engine. By default it is hotsec_serv and if you are not sure please don't change it



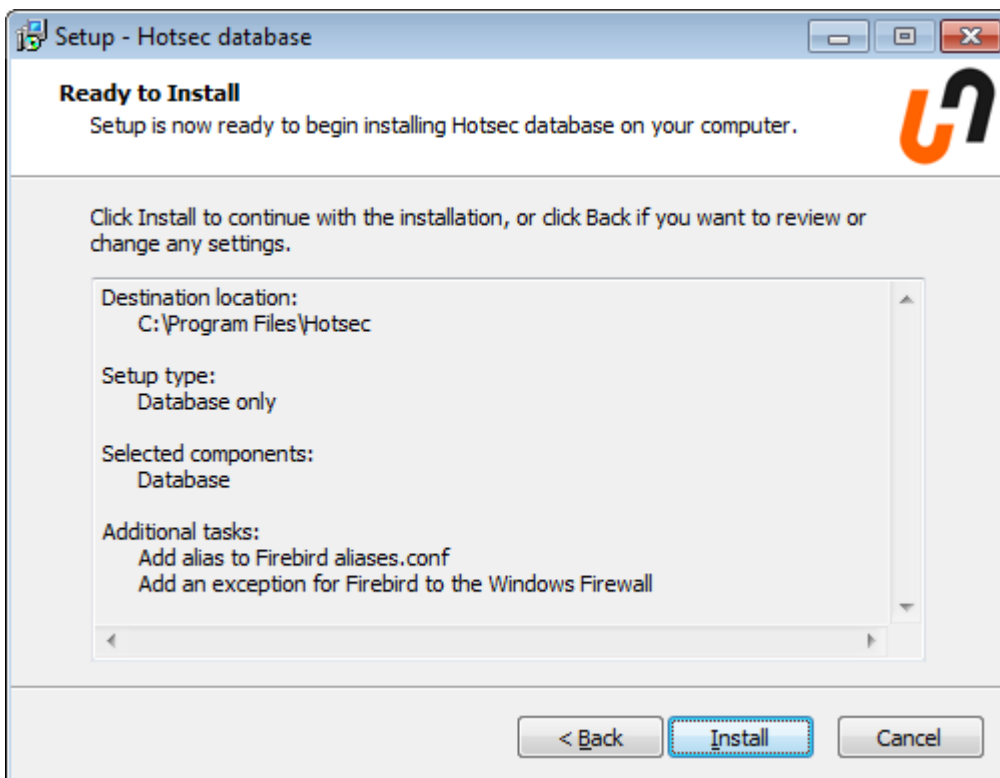
Click "Next" to continue

Next window will ask to create database alias and configure windows firewall



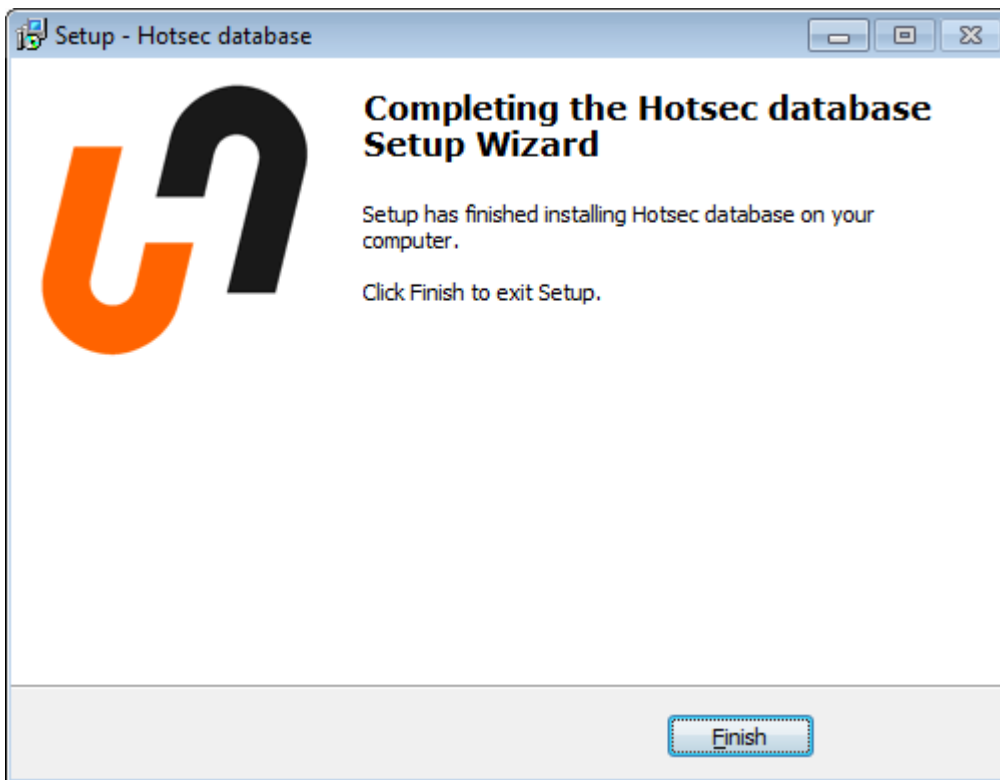
Click "Next" to continue

Next window is for confirmation of chosen options



Click "Install" to continue

If you see the following window you have successfully installed Hotsec database



Click "Finish" to close the window

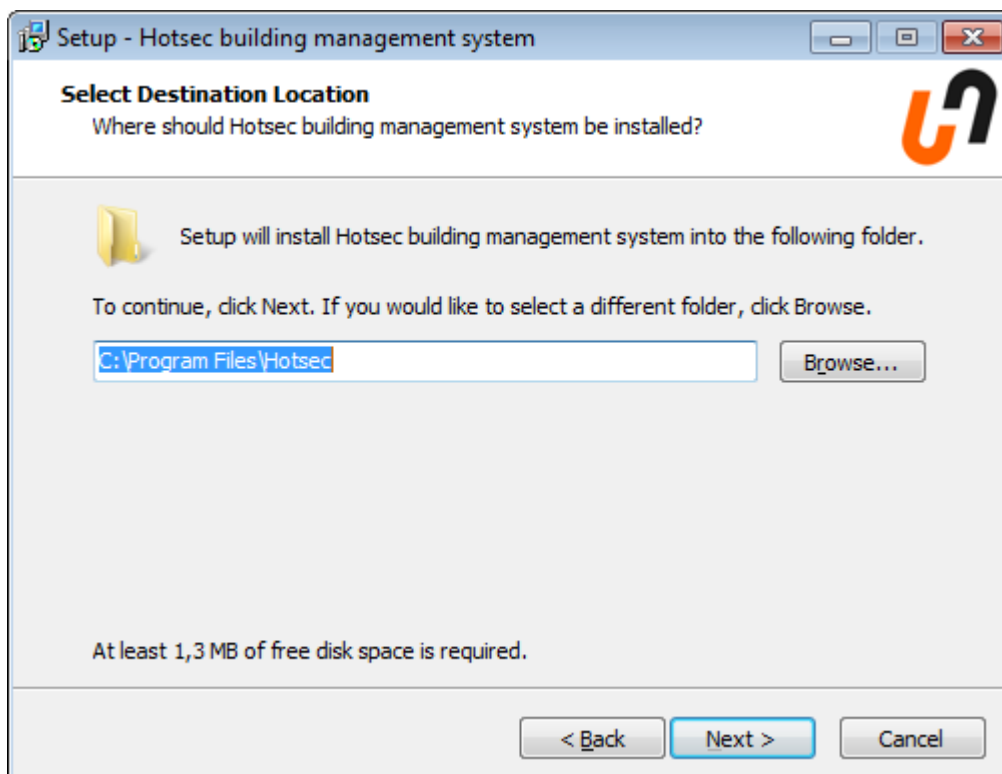
Hotsec core and services installation

After launching the installation package Hotsec_ the following window should appear



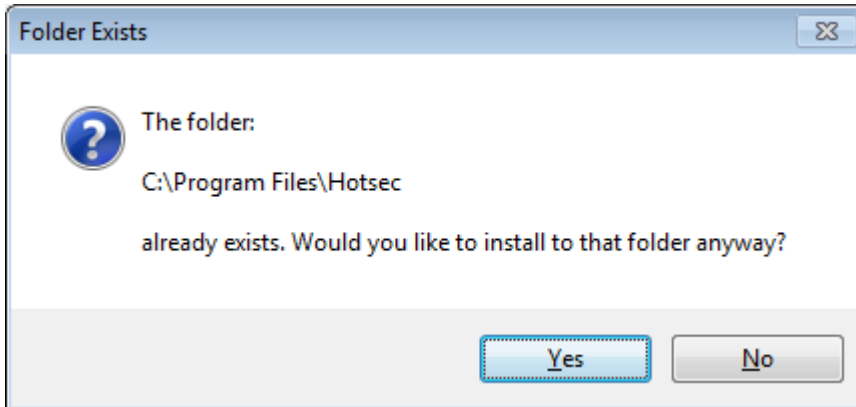
Click "Next" to continue

Next window will ask the location of Hotsec software



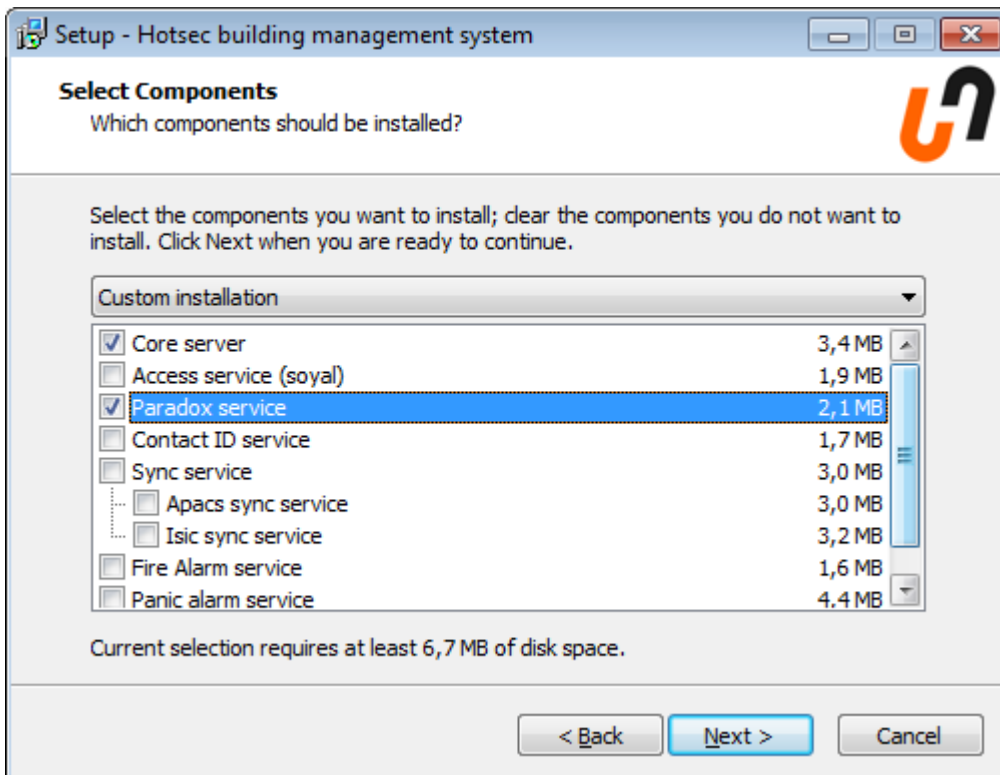
Click "Next" to continue

If you already have this folder a confirmation message will appear



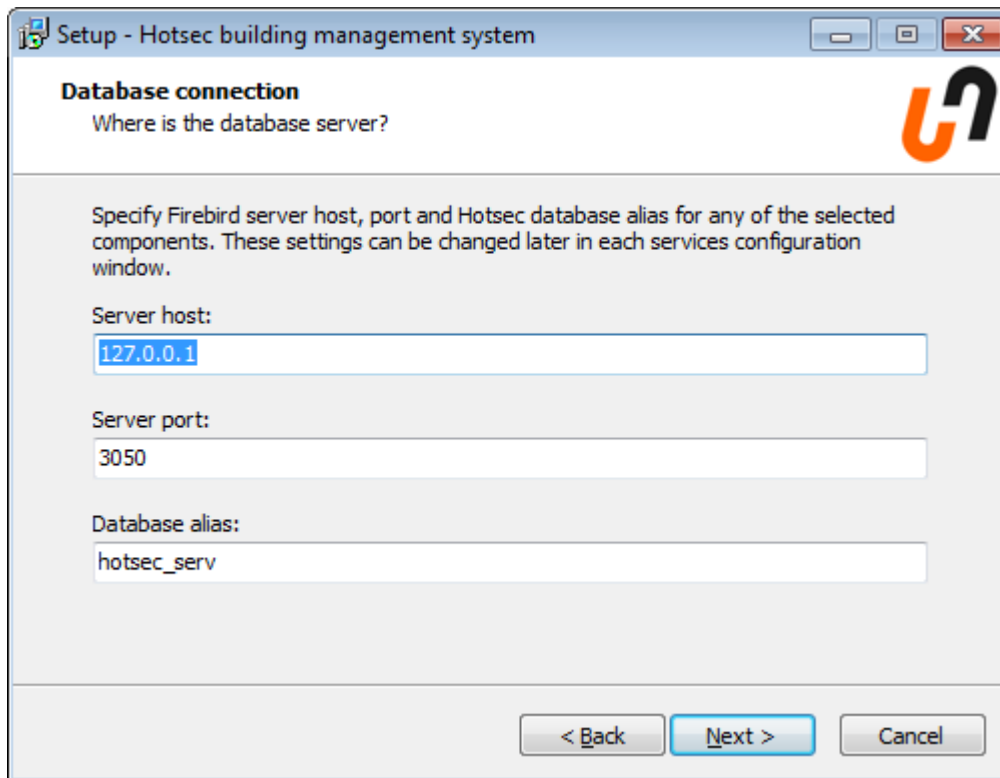
Click "Yes" to continue

Next window is very important. Here you must choose what components will be installed. Depending on the Hotsec license dongle what features are allowed. It is good to install only the features allowed on your license because other features don't work if they are not allowed by the license. For systems using only Paradox EVO panels just check "core server" and "paradox service".

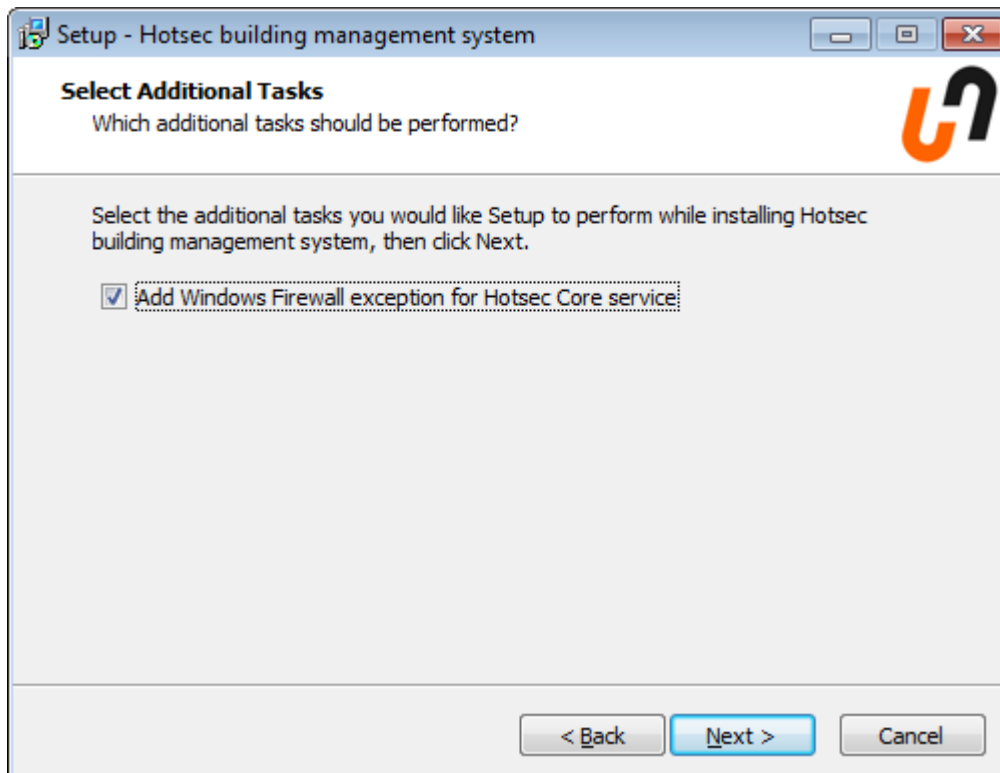


Click "Next" to continue

Next dialogue will ask the location of the database and alias. If you have done the database installation without changing any of those settings just click next to continue.

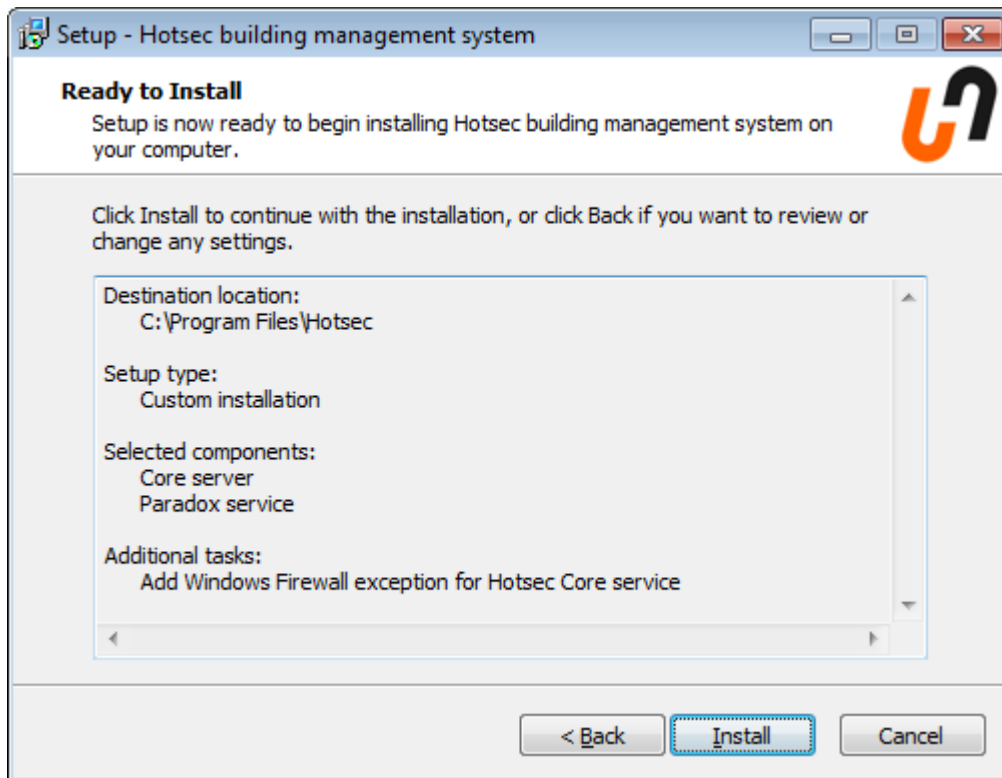


Next window asks to modify windows firewall



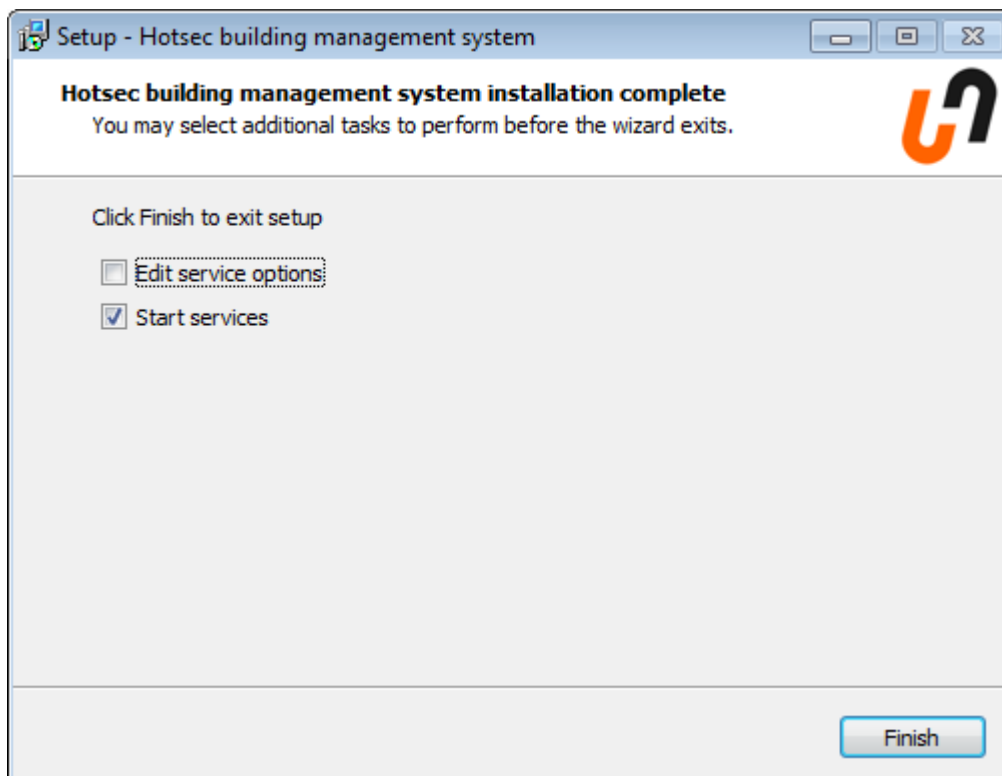
Click "Next" to continue.

Next window contains all the setting and asks for confirmation



Click "Install" to proceed.

Next window will ask if to start services and configure them. If you are using just EVO panels click finish, there is nothing to edit in paradox service.



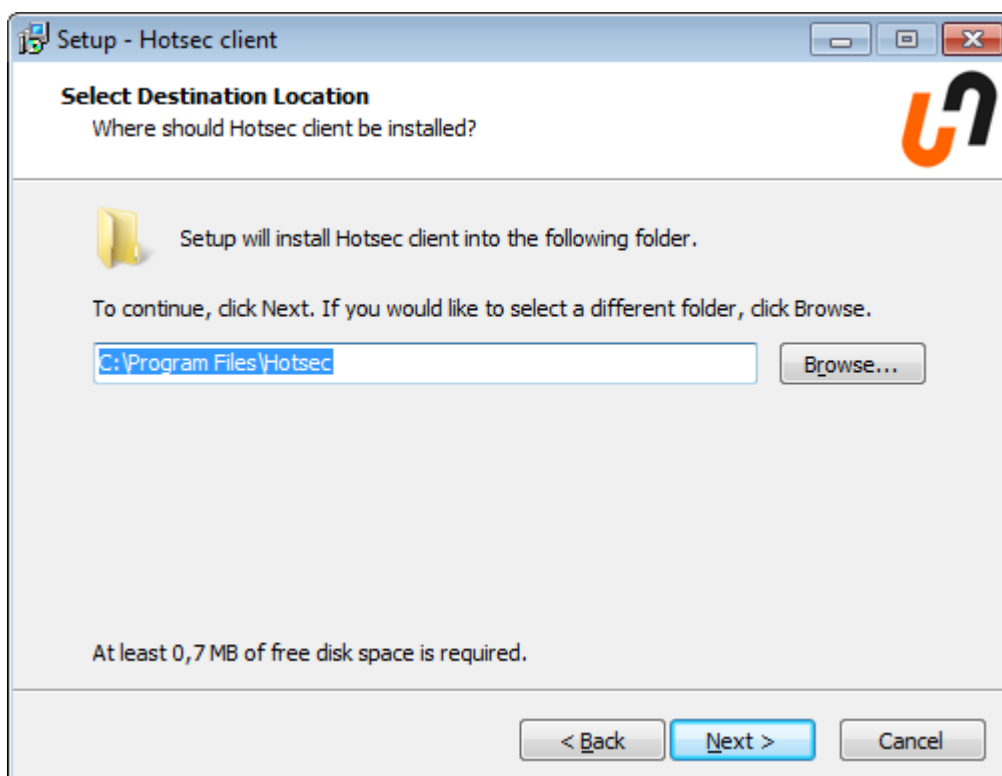
Hotsec client installation process

After launching the installation package Hotsec_Client_ the following window should appear



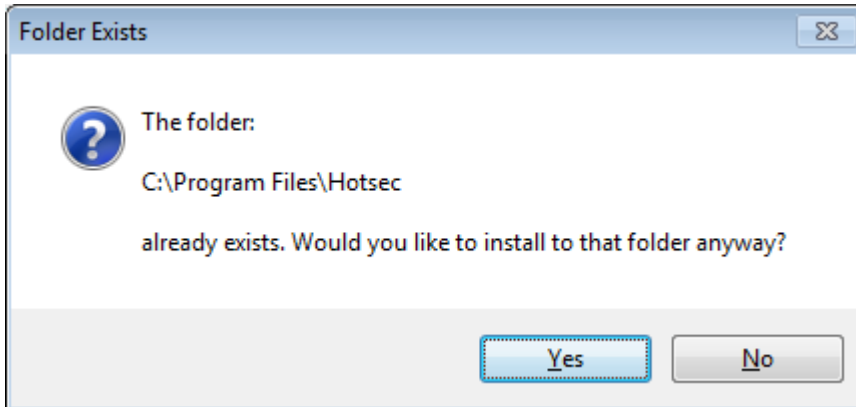
Click "Next" to continue

Next window will ask for Hotsec location



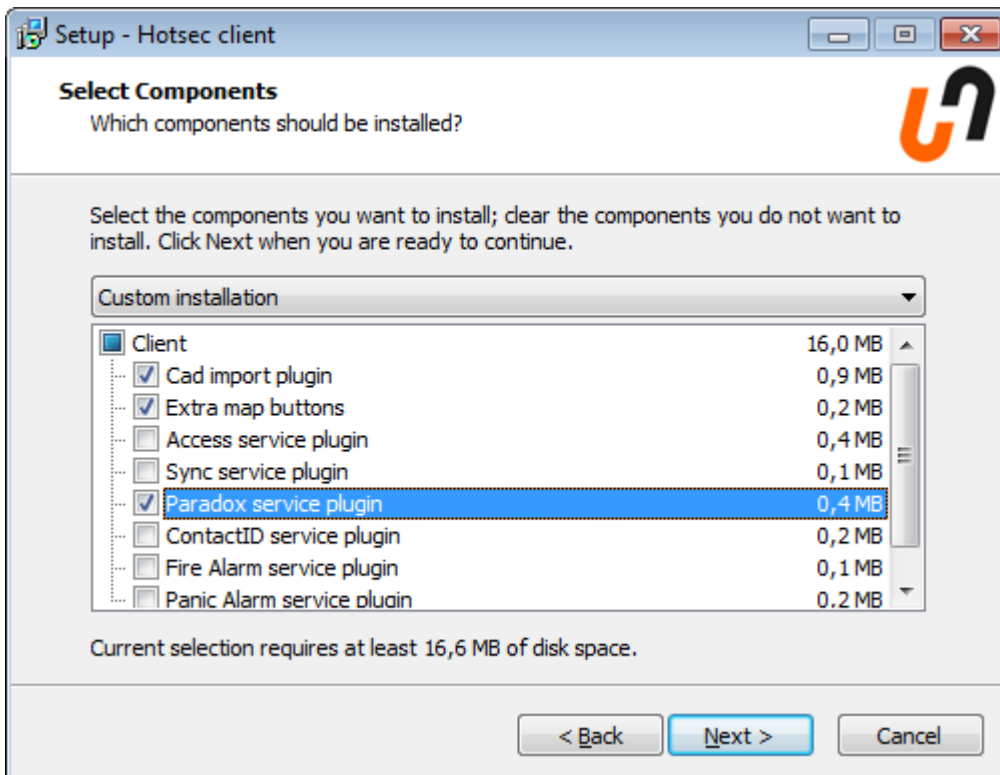
Click "Next" to continue

If you already have this folder a confirmation message will appear



Click "Yes" to continue

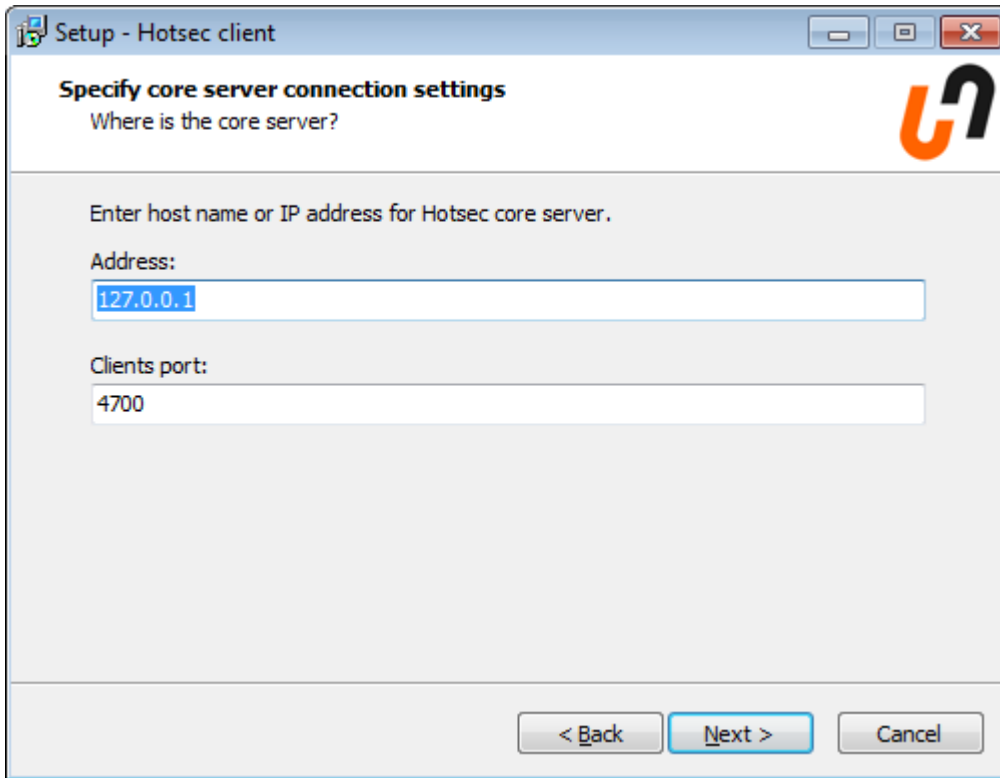
Next window is for choosing the client components to be installed. Components will depend what components are installed in the server and what components are allowed by the license. There is no need to install unnecessary components because they will make unusable buttons or features into the client.



For paradox EVO users it is recommended to choose following components:

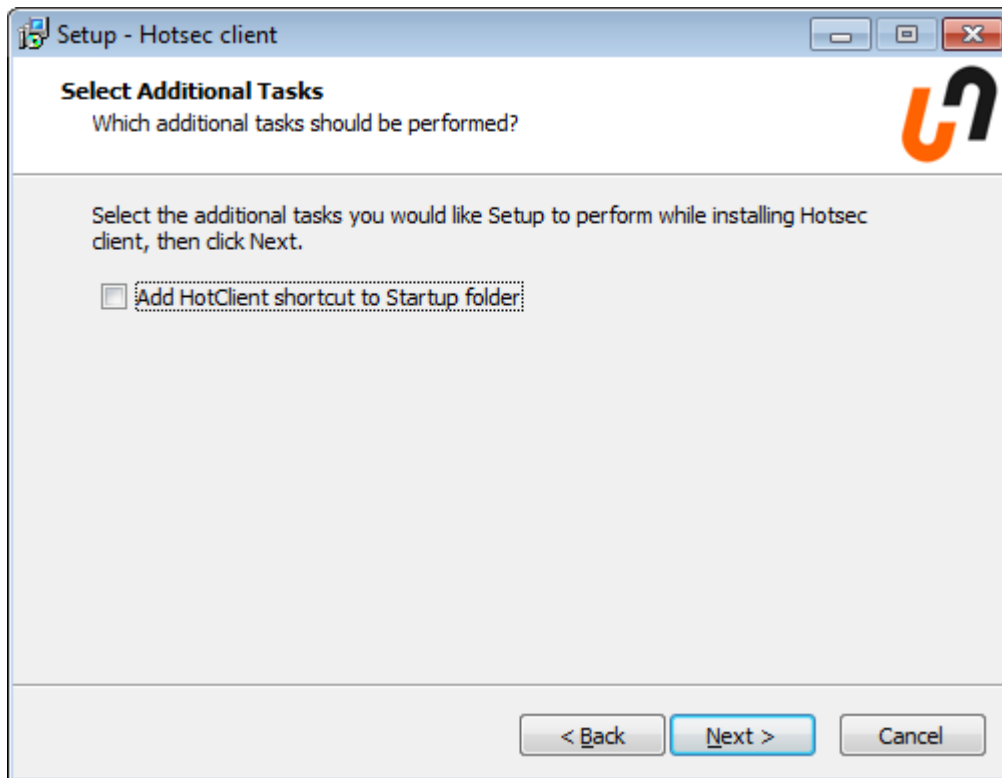
- Cad import plugin to import and modify DWG room plans
- Extra map buttons to enable web browser link buttons into drawings
- Paradox service plugin for Paradox features

Next window will ask the Hotsec server location and port. If you are having the server in the same machine with client you don't need to change anything here.



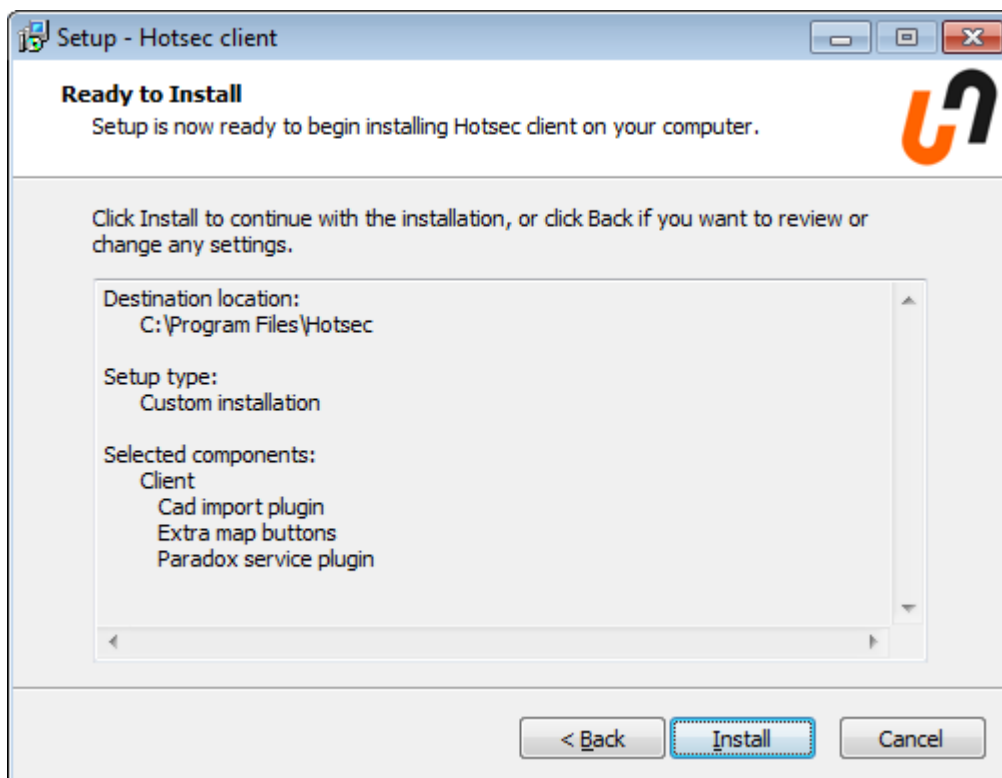
Click "Next" to continue

Next window will ask if you want to start Hotsec client every time when Windows starts. (it will add shortcut to Hotsec client into Windows Startup folder.)



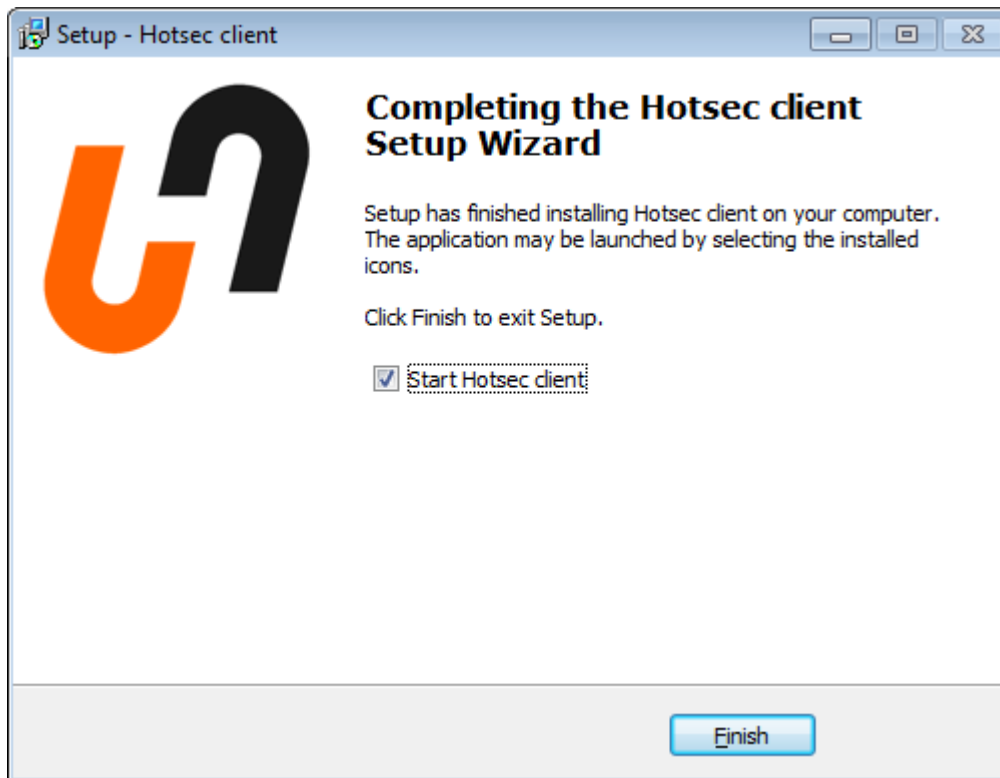
Click "Next" to continue

The next window is for confirmation before installing



Click "Install" to continue

If you see the final window you have successfully installed Hotsec client



Click Finish