

HOTSEC setup manual

v. 1.9



Contents

Launching:.....	3
Adding/editing new Paradox panel.....	4
Adding/editing new partition.....	6
Adding/editing zones.....	7
Adding/editing doors.....	8
Change door open schedule.....	9
Adding/Editing PGMs.....	10

Description of HOTSEC main operations

This manual is meant for the installers of Hotsec software. Manual will describe how to add new panels and what setting should be made in Hotsec.

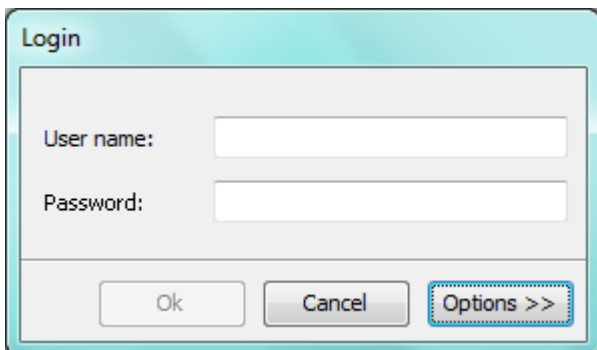
Please refer to installation manual how to install the software.

Launching:



Double-Click on Hotsec icon

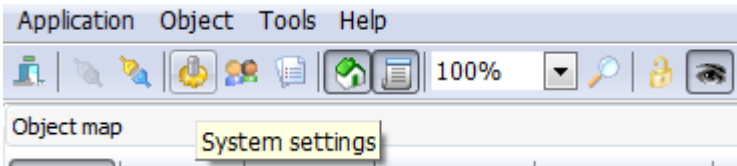
Enter your user name and password. Password is case sensitive. Default administrator user is "Admin" and password is "1".

A screenshot of a 'Login' dialog box. The dialog has a light blue title bar with the word 'Login' in black. Below the title bar, there are two text input fields. The first is labeled 'User name:' and the second is labeled 'Password:'. At the bottom of the dialog, there are three buttons: 'Ok', 'Cancel', and 'Options >>'. The 'Options >>' button is highlighted with a dashed border.

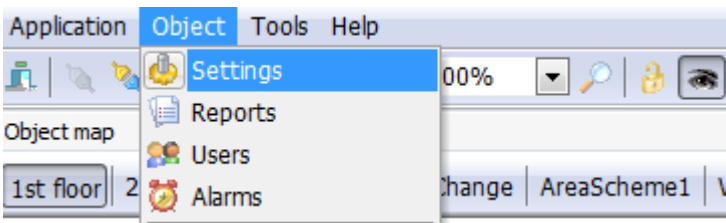
Note: Modifying system setup user requires administrator privileges.

Adding/editing new Paradox panel

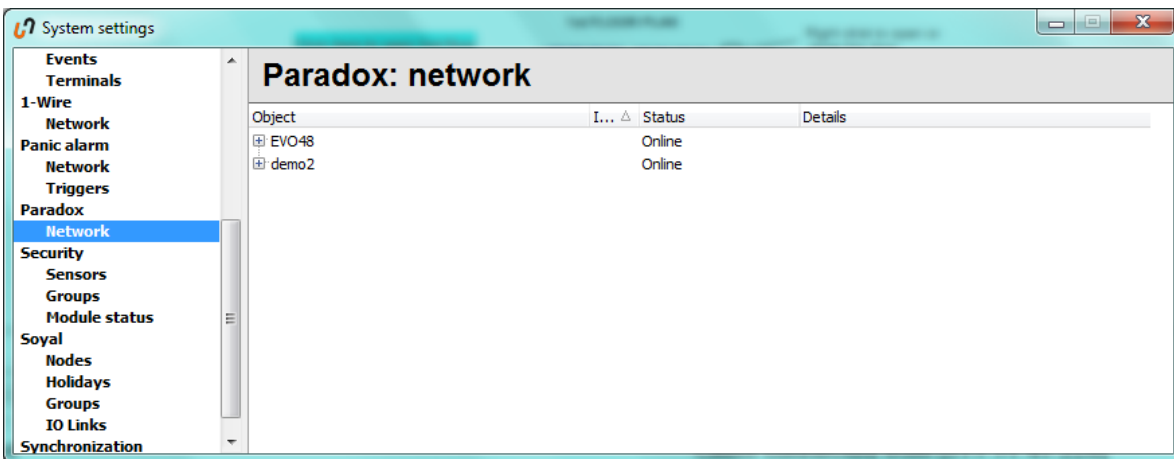
Open system settings



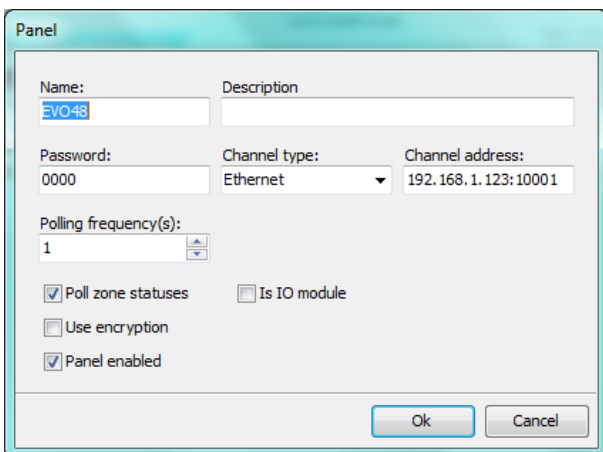
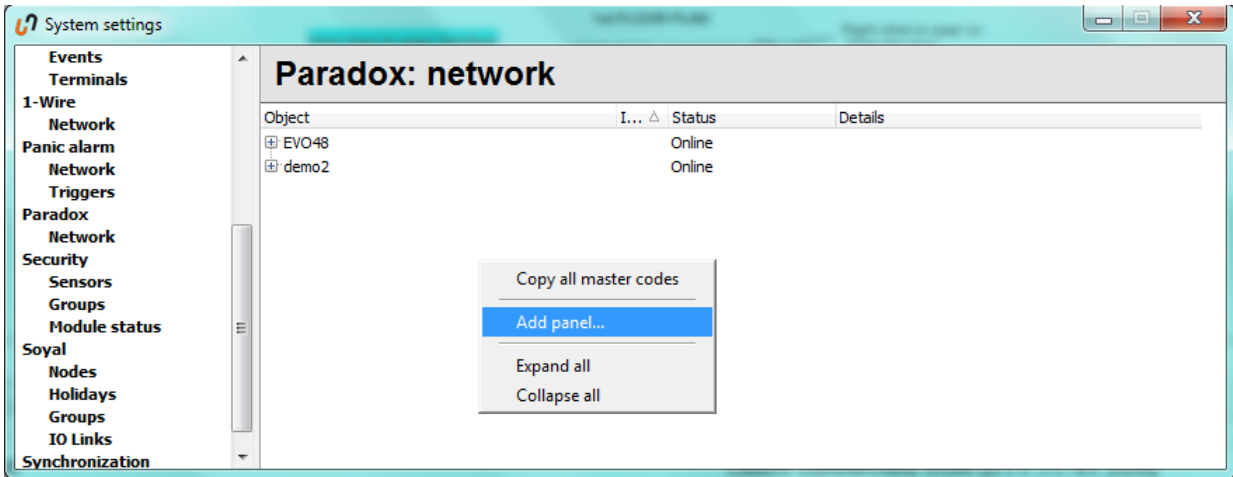
Or



Choose Paradox - > network



To add a new panel, make a right-click on empty space in the right side of the window and choose "Add panel..."



Following dialogue window will appear

Name*: Name of the panel in system

Description: More precise description

Password*: EVO panels „PC password“

Channel type*: choose COM port (using for example 307USB module) or Ethernet using Hotsec IP module

Channel address*: in case of COM port – COM port number in PC (for example: “1”), in case of Ethernet IP address of IP module and TCP port (for example: “192.168.1.100:10001”)

Polling frequency(s): Polling interval in seconds,

how fast the panel is questioned by software for changes (zones, doors, pgm-s and partitions status changes).

Poll zone statuses: if zone statuses are monitored in live (zone open, zone close etc).

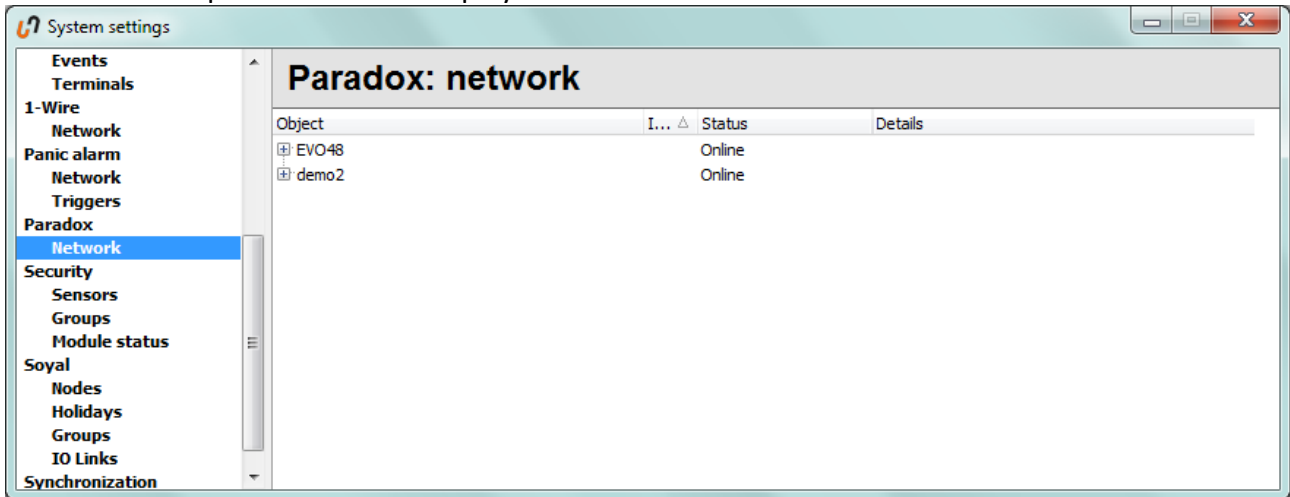
Use encryption: Works with Hotsec IP module with encryption option, needs defining a 128 or 256bits key what should match the key defined in IP module

Panel enabled: If the panel is enabled or not.

*- required fields

For saving the changes press OK, otherwise Cancel.

Once a new panel has been added, Hotsec will try to connect to panel using provided info. When successful then panel status will display “Online”.

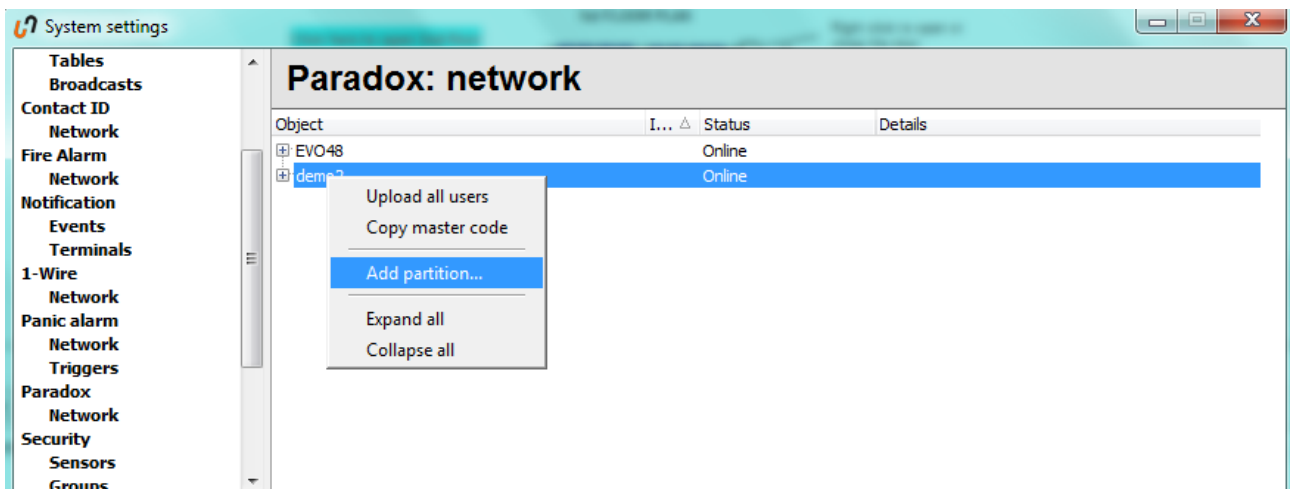


NB! It may take up to 30 seconds for a panel to go online.

TIP! If after 30 seconds the panel status is still “Offline” and details field is empty please try to enable/disable once more. If the message „socket error # 10060” appears in details field, it means there is no connection with IP module. Please check IP modules network connection. If there is a message „wrong password” then make sure PC password in Hotsec settings and in panel match.

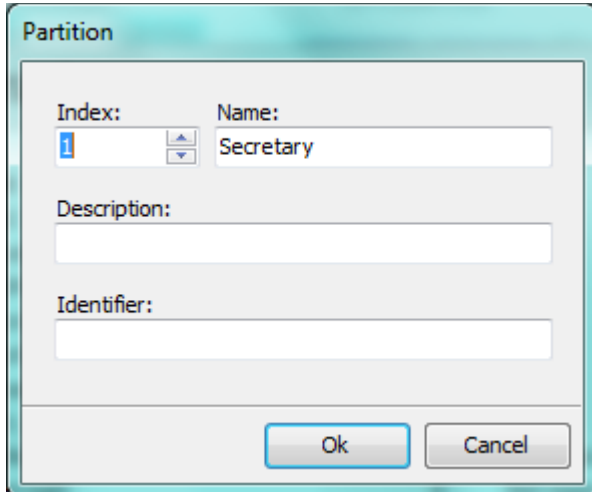
Adding/editing new partition

In the Paradox: network window right click on panel name and choose “Add partition...”.



To change existing partition, click on “+” sign next to panel name to expand list of panel partitions. Double-click on partition name to open partition editing window.

Following window will open



The image shows a dialog box titled "Partition" with a light blue header. It contains four input fields: "Index:" with a small dropdown menu showing the number "1", "Name:" with a text box containing "Secretary", "Description:" with an empty text box, and "Identifier:" with an empty text box. At the bottom, there are two buttons: "Ok" and "Cancel".

Index*: Partition number in panel

Name*: Name of the partition

Description: More precise description if needed

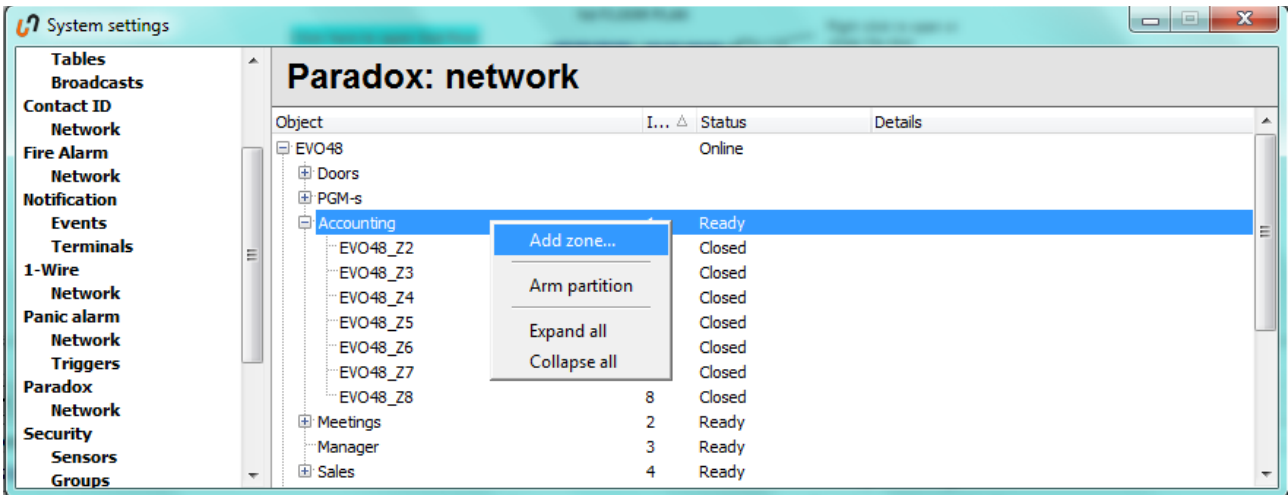
Identifier: Used if additional USSD control module is installed

*- required fields.

For saving the changes press OK, otherwise Cancel.

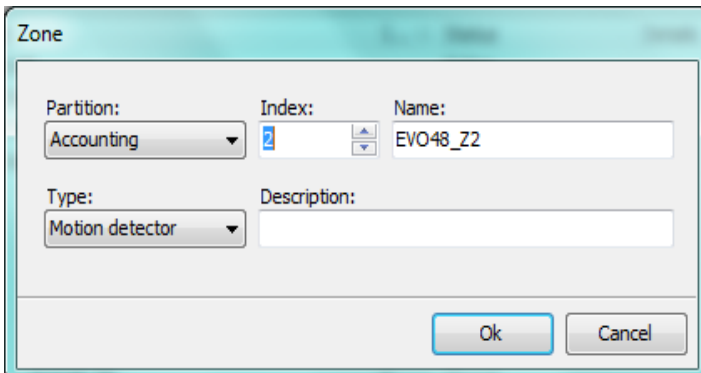
Adding/editing zones.

In the Paradox: network window right click on a partitions name and choose "Add zone..."



To change existing zone, please double-click on zone name.

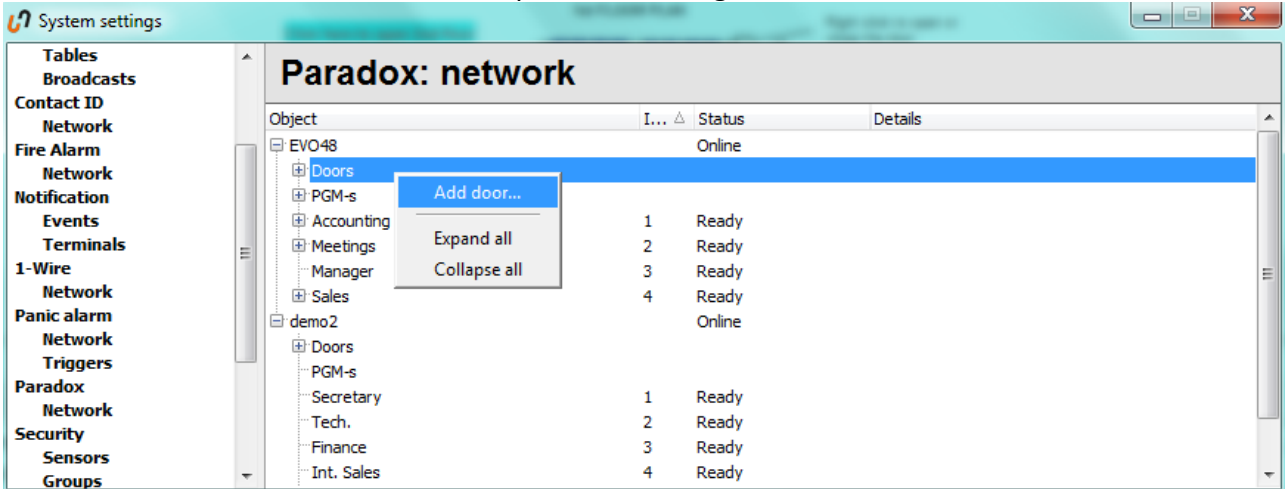
Following window will open



Partition: Name of partition where current zone will be assigned/belongs to.
Index*: Zone number in the panel.
Name*: Name of the zone
Type: Type of detector connected to the zone
Description: More precise description if needed

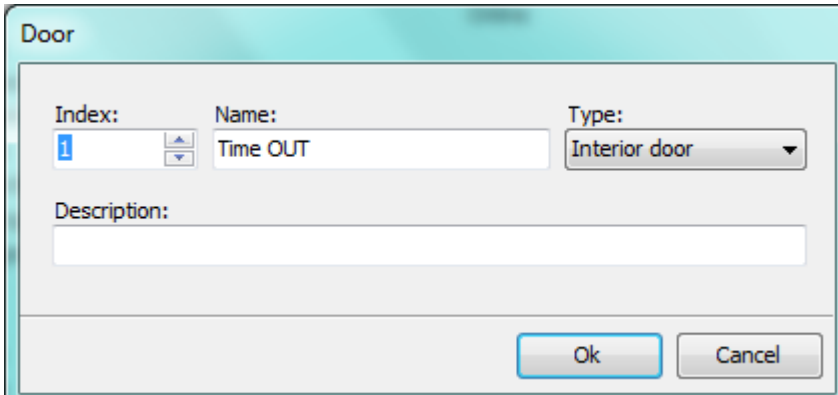
Adding/editing doors

In the Paradox: network window under panel->doors right click and choose “Add door”,



To change existing door, please double-click on door name.

Following window will open



Index*: door number in the panel.

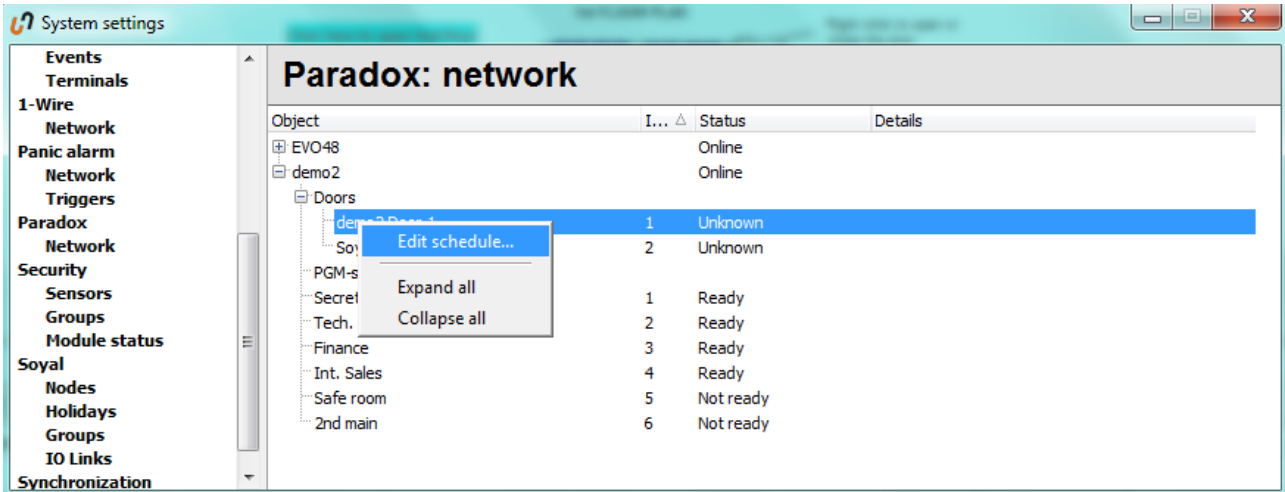
Name*: name of the door.

Type: type of the door.

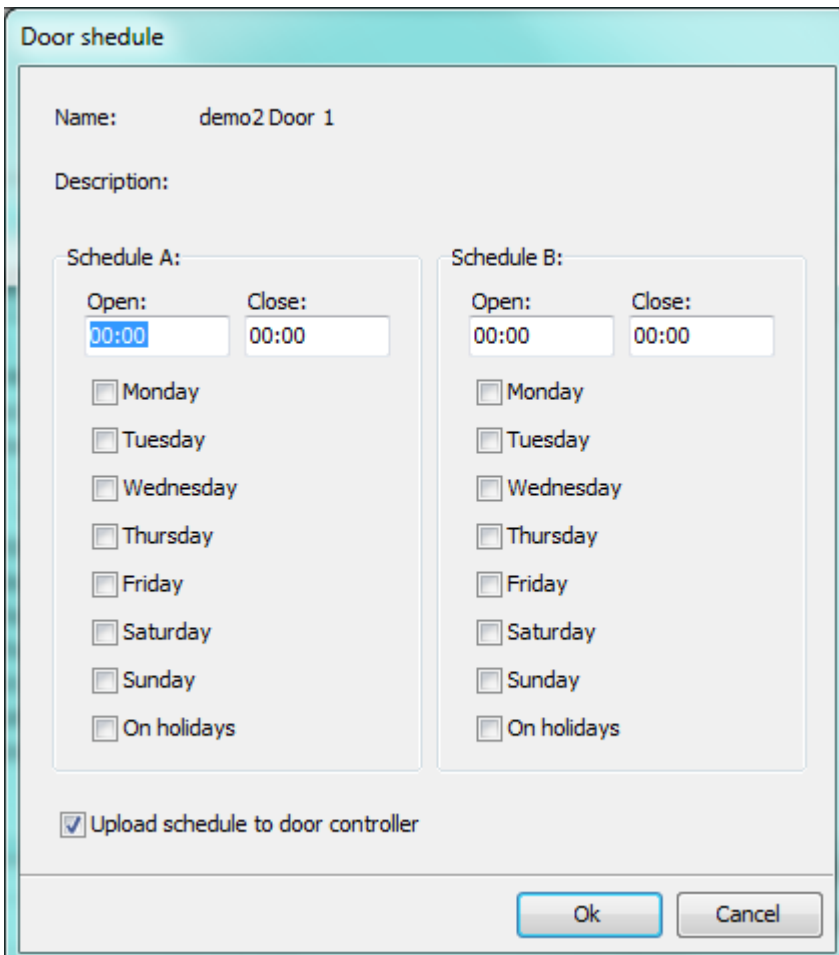
Description: More precise description if needed

Change door open schedule

In the Paradox: network window under panel->doors right click on door name and choose “Edit schedule”



Following window will open

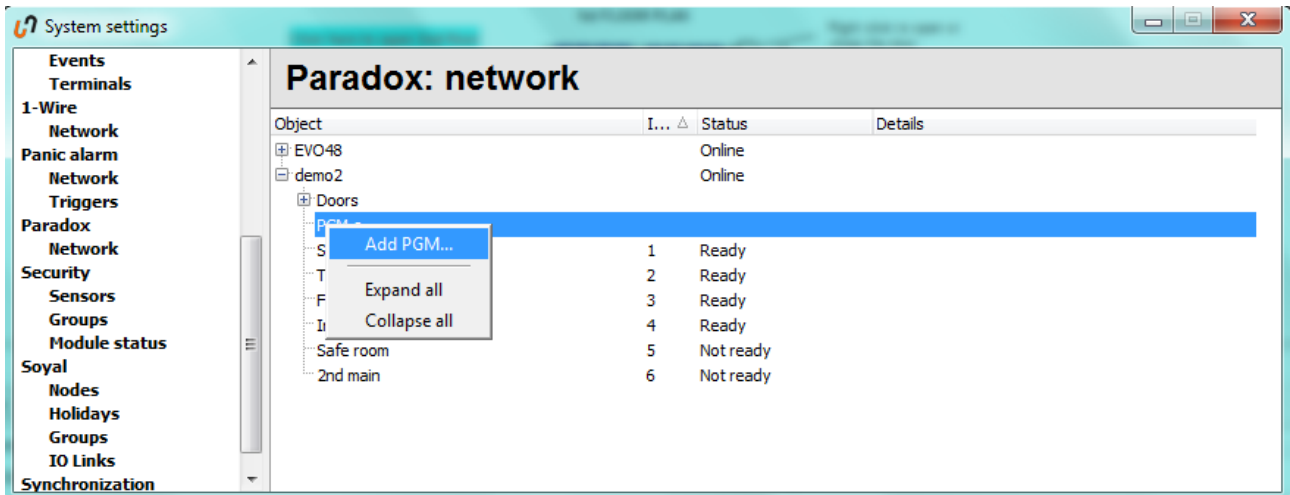


Schedule A: define the main schedule. When using “On Holidays” then holidays must be defined in the panel.
Schedule B: define second schedule if you need to have break time between the schedules.

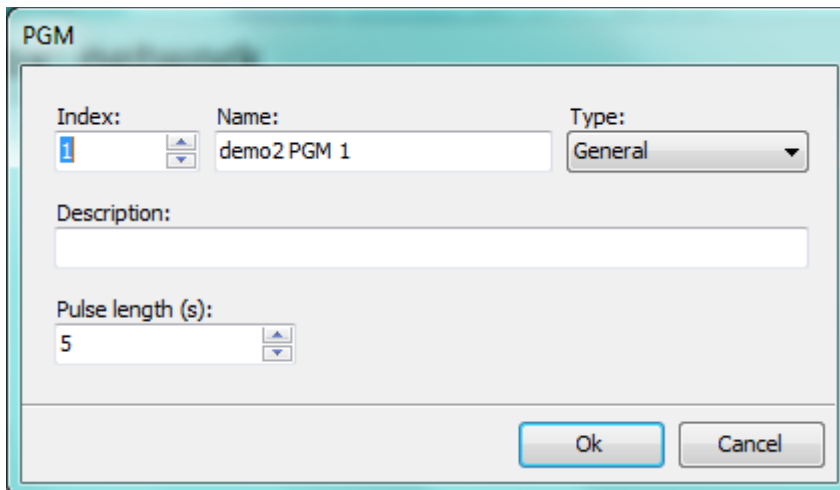
Choose “Upload schedule to door controller” if you like to load the changed schedule directly to panel

Adding/Editing PGMs

In the Paradox: network window under panel->PGMs right click and choose “Add PGM”



Following window will open



PGM

Index: Name: Type:

Description:

Pulse length (s):

Ok Cancel

Index*: Number of PGM in the panel

Name*: Name of PGM

Type: Type of PGM

Description: More precise description if needed

Pulse length (s): If the PGM type is “Impulse” or “Reset” it is possible to define pulse length in seconds.